

# Downton Abbey®

## The Downstairs



FABRICS BY KATHY HALL



Behind the Scenes Quilt Design:  
**Lucy Fazely**

Quilt Size: 57" x 66"

[andoverfabrics.com](http://andoverfabrics.com)



### About The Downstairs

Based on the small prints that Mrs. Patmore, Daisy, Ivy, and other house staff wear. They're unassuming prints, which add a little color to what would otherwise be a life of uniformed servitude. Tiny prints, little plaids, stripes. Not overly bold; the colors reflect the Downstairs lifestyle in that they have their own somewhat muted sensibility.

Downton™ and Downton Abbey®. ©2013  
Carnival Film & Television Limited. All Rights Reserved.

andover

•  
• makower uk  
• *The Henley Studio*  
•

Free Pattern Download Available

1384 Broadway New York, NY 10018  
Tel. (800) 223-5678 • [andoverfabrics.com](http://andoverfabrics.com)

# Behind the Scenes



Introducing Andover Fabrics new collection:

Downton Abbey® – The Downstairs by Kathy Hall

Quilt design by Lucy Fazely

Quilt finishes 57" x 66"

15 Blocks: 9" x 9"

15 Reversed Blocks: 9" x 9"

*Fans of Downton Abbey know that the downstairs stories are just as compelling as the upstairs stories on this popular Masterpiece Classics series. The “behind the scenes” activity shows the hardworking staff that makes life possible for the Crawley family. The fabrics for the below stairs characters are shown here in this version of an early 1900’s block called Arabic Lattice.*

## Cutting Directions

**Note:** Read assembly directions before cutting patches.

All measurements are cut sizes and include ¼" seam allowances. A fat ¼ is an 18" x 21"-22" cut. Borders are cut the exact lengths required plus ¼" seam allowances.

WOF designates the width of fabric from selvedge to selvedge (approximately 42" wide).

### Fabric A

Cut (2) borders 3½" x 60½", cut lengthwise  
Cut (2) borders 3½" x 57½", cut lengthwise  
Cut (5) strips 2½" x 57" for binding, cut lengthwise  
Cut (3) Patch 1  
Cut (3) Patch 1 reversed  
Cut (6) squares 2½"

### Fabric B

Cut (2) borders 2½" x 56½", cut crosswise and pieced  
Cut (2) borders 2½" x 51½", cut crosswise and pieced  
Cut (3) Patch 1  
Cut (3) Patch 1 reversed  
Cut (6) squares 2½"

### Fabric C

Cut (2) borders 1½" x 54½", cut crosswise and pieced  
Cut (2) borders 1½" x 47½", cut crosswise and pieced  
Cut (3) Patch 1  
Cut (3) Patch 1 reversed  
Cut (6) squares 2½"

## Fabric Requirements

		Yardage	Fabric
<b>Fabric A</b>	border, binding	1¾ yards	7332-N
<b>Fabric B</b>	middle border	¾ yard	7666-BN
<b>Fabric C</b>	inner border	½ yard	7666-RK
<b>15 Lights</b>	blocks	fat ¼ yard ea.	
	7597-B	7597-G	7597-R 7598-B
	7598-N	7598-R	7600-B 7600-R
	7601-B	7601-G	7601-R *7602-B
	7602-K	7602-R	7617-L
<b>7 Mediums</b>	blocks	fat ¼ yard ea.	
	7332-B1	7332-K1	7332-R 7617-C
	7618-C	7665-B	7665-R
<b>*Backing</b>		¾ yards	7602-B

### 15 Lights

From each:  
Cut (2) Patch 1  
Cut (2) Patch 1 reversed  
Cut (4) squares 2½"

### 7 Mediums

From each:  
Cut (3) Patch 1  
Cut (3) Patch 1 reversed  
Cut (6) squares 2½"

### Backing

Cut (2) panels 37" x 65", pieced to fit quilt top with overlap on all sides

# Behind the Scenes

## Making the Quilt

1. There are 15 blocks and 15 reversed blocks that alternate in 6 horizontal rows. The tricky part of this pattern is making each block with the correct combination of prints so when blocks are joined, the same fabric touches itself to form the “V” shapes. Working on a large design wall or flat surface, arrange all Patch 1’s and squares into 15 blocks, following the Quilt Diagram carefully for color placement. Leave enough space between these blocks for the reversed blocks. Arrange all reversed Patch 1’s and squares into 15 reversed blocks. Stand back to look at the overall design. Once you are satisfied, sew a four-patch unit for each block. Replace the four patches back on the design wall in the correct orientation.

2. Patches for blocks are joined using a “partial seam” technique. Referring to Diagram 1, sew the appropriate patch 1 to the side of the four-patch unit, aligning the wider end of patch 1 with the edge of the four-patch unit. End stitches about 1” away from the end of the four-patch unit as shown. Working in a clockwise direction, sew the second patch 1 to the adjacent side, again aligning the wider end of the patch 1 with the edge of the four-patch unit (Diagram 2). Sew a third, and then a fourth patch 1 to the remaining sides (Diagram 3). Finally, complete the unfinished seam between the first and last patch 1’s. Make 15 blocks using the appropriate fabrics in each.

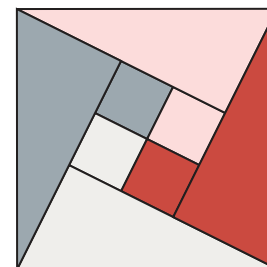
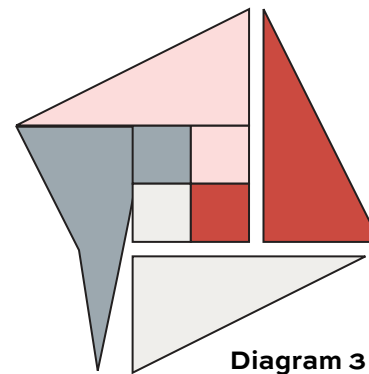
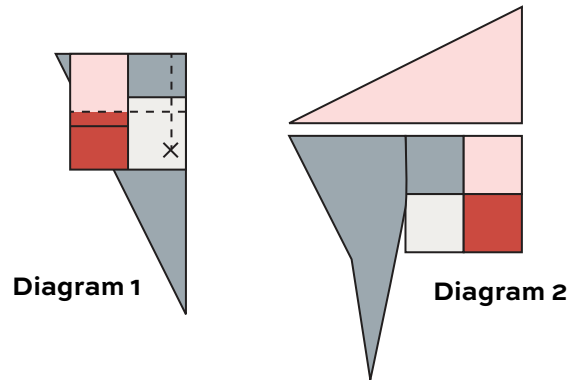
3. Repeat Step 2 to make 15 reversed blocks, noting that the patch 1’s are added to the four-patch unit in a counterclockwise direction.

4. Referring to the Quilt Diagram, join the 3 blocks and 3 reversed blocks in each row. Join the rows.

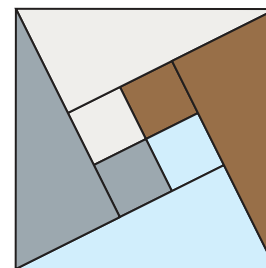
5. Sew the borders on in this order, sewing longer side borders on first in each round, then shorter top and bottom borders: Fabric C, Fabric B, Fabric A.

## Finishing the Quilt

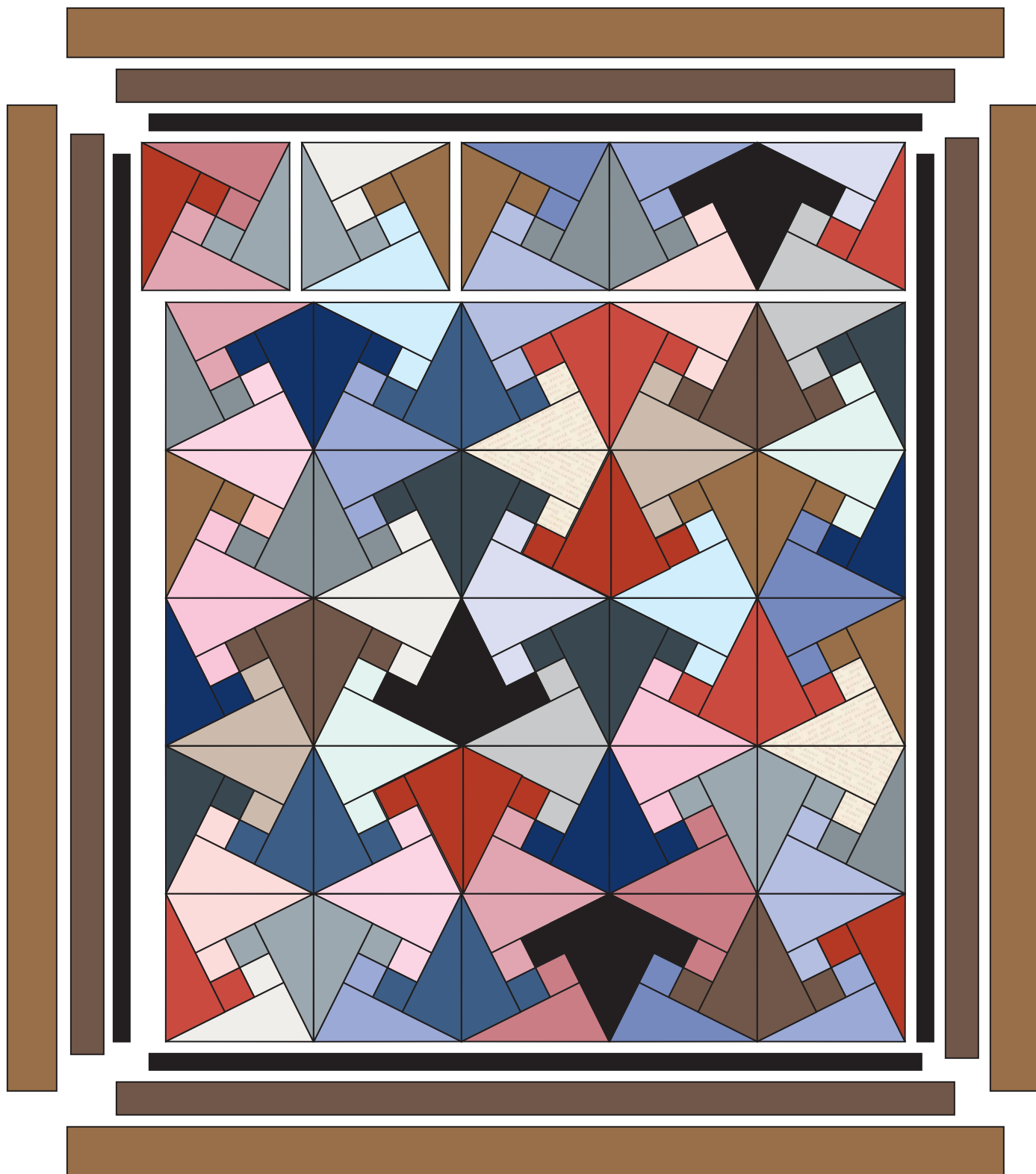
6. Layer the quilt with batting and backing and baste. Quilt in the ditch around borders and block patches. Quilt the Patch 1’s as desired. Bind to finish the quilt.



Block – Make 15

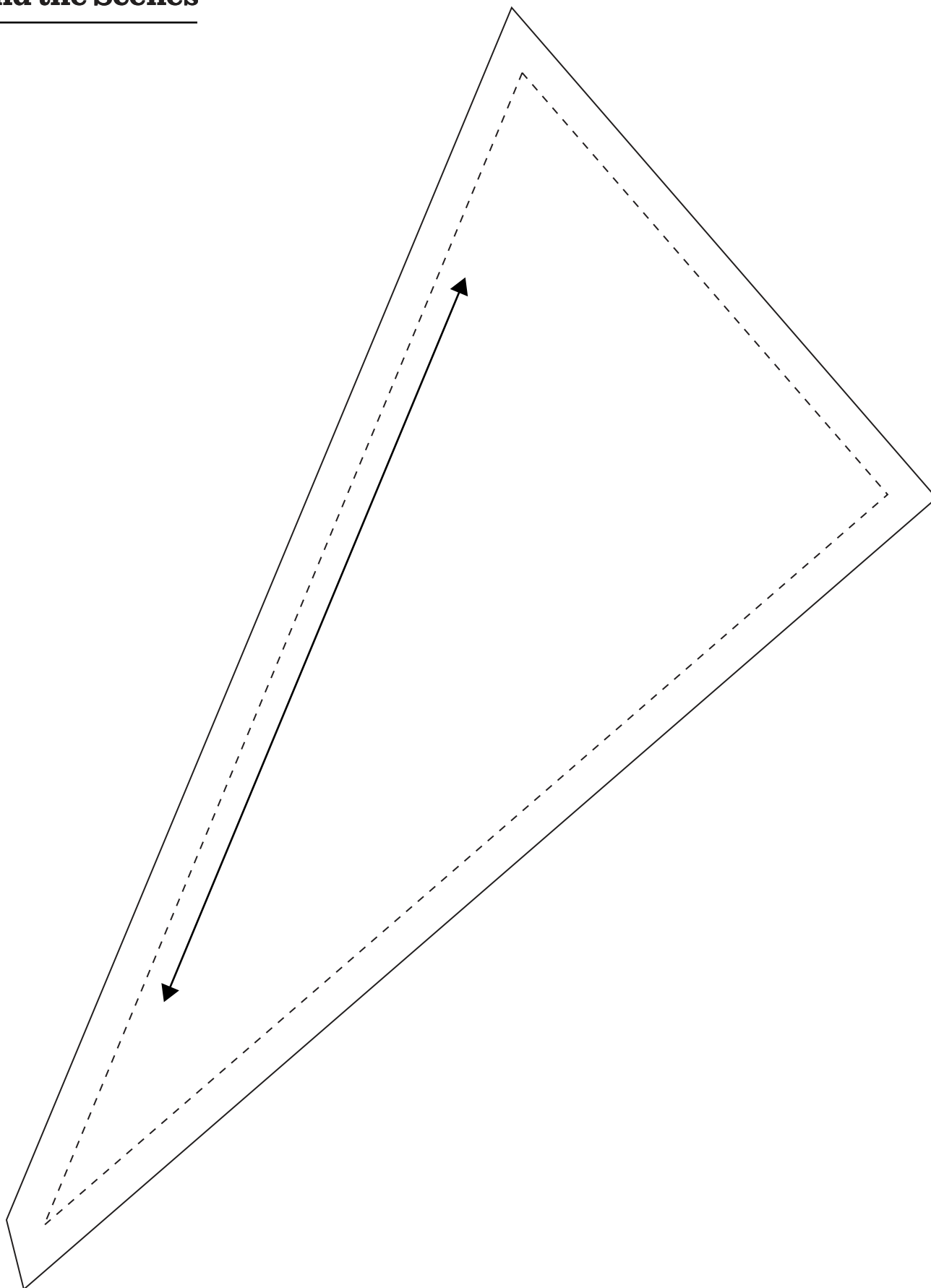


Reversed Block – Make 15



Quilt Diagram

## Behind the Scenes



# Downton Abbey®

## The Downstairs



FABRICS BY KATHY HALL



7597-B



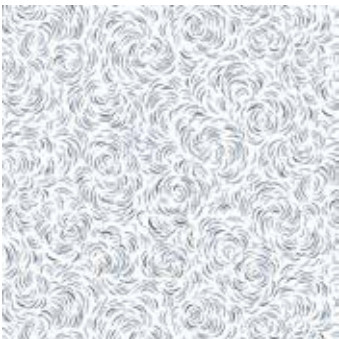
7597-G



7597-R



7600-B



7598-B



7598-G



7598-R



7600-R



7601-B



7601-G



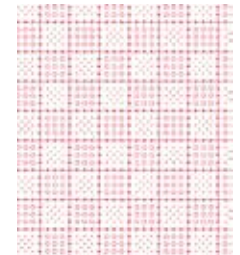
7601-R



7602-B



7602-K



7602-R

Blend with additional fabrics from Downton Abbey®



7332-B1



7332-K1



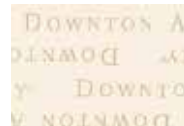
7332-N



7332-R



7617-C



7617-L



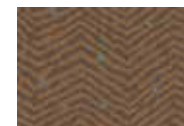
7618-C



7665-B



7665-R



7666-BN



7666-RK

All fabrics used in quilt pattern.  
Fabrics shown are 50% of actual size.

andover

•  
•  
•  
•  
makower uk  
*The Henley Studio*

Free Pattern Download Available

1384 Broadway New York, NY 10018  
Tel. (800) 223-5678 • andoverfabrics.com